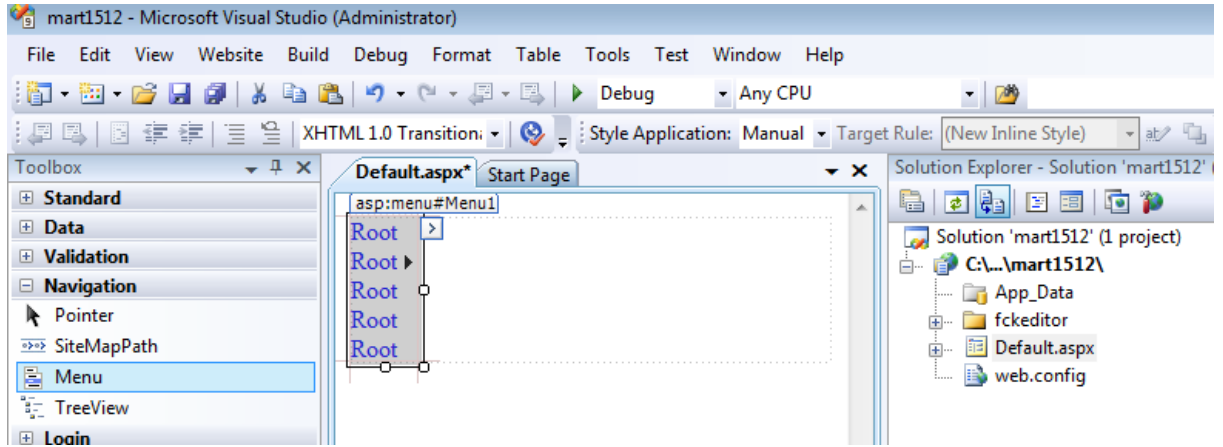
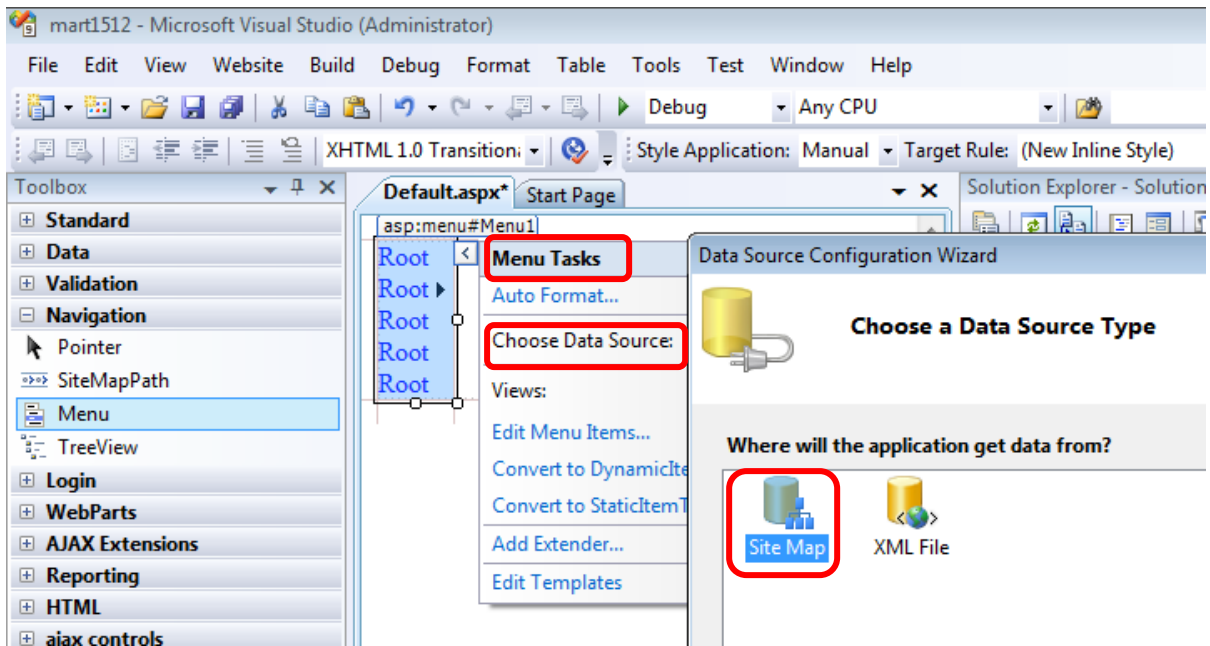


Yeni site açıp Menu kontrolunu ekliyoruz

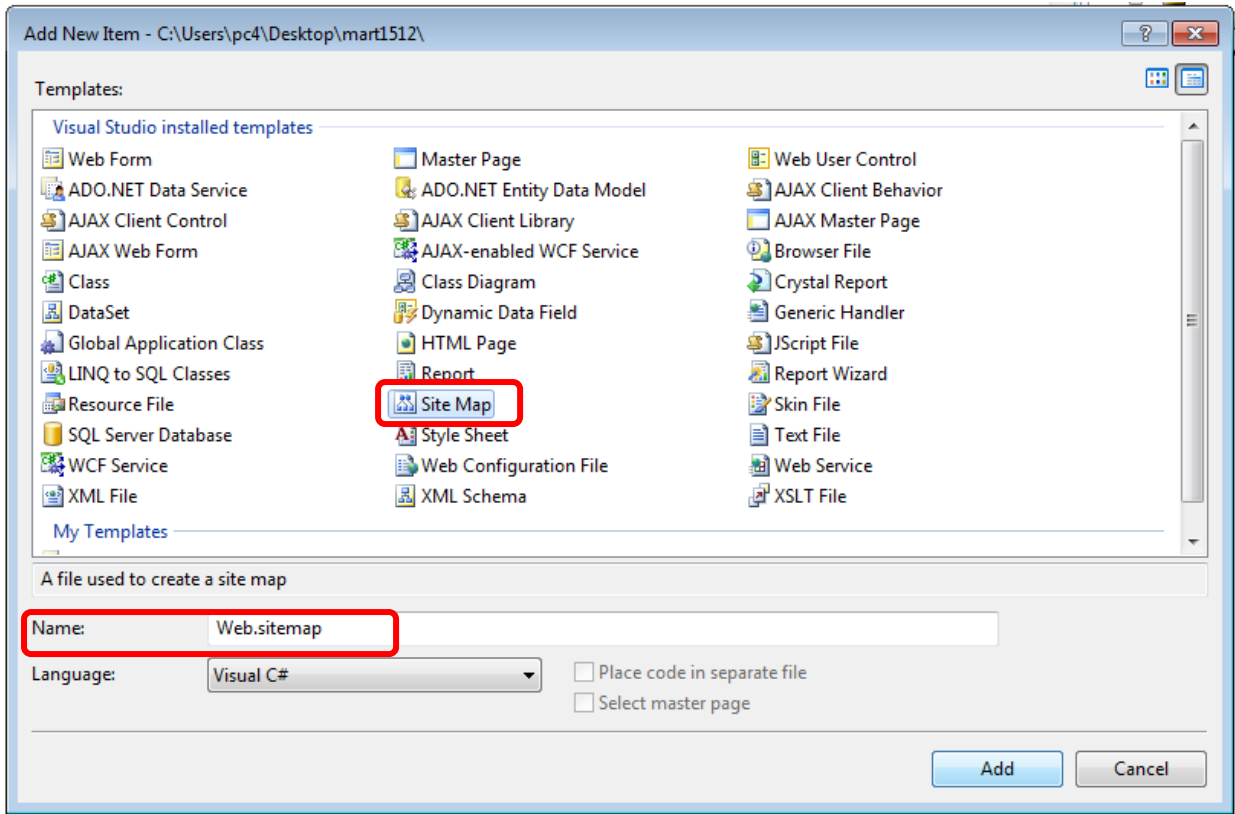


Menu Tasks → Choose Data Source → Site Map → OK



Şimdi Site Map oluşturalım

Web Site → Add New Item → Site Map → Name : web.sitemap



Bir XML dosyası oluşturuyor. Etiketler var. En başta Ana sayfa (Default.aspx) olmalı

```
Web.sitemap Default.aspx* Start Page
<?xml version="1.0" encoding="utf-8" ?>
<siteMap xmlns="http://schemas.microsoft.com/AspNet/SiteMap-File-1.0" >
  <siteMapNode url="" title="" description="">
    <siteMapNode url="" title="" description="" />
    <siteMapNode url="" title="" description="" />
  </siteMapNode>
</siteMap>
```

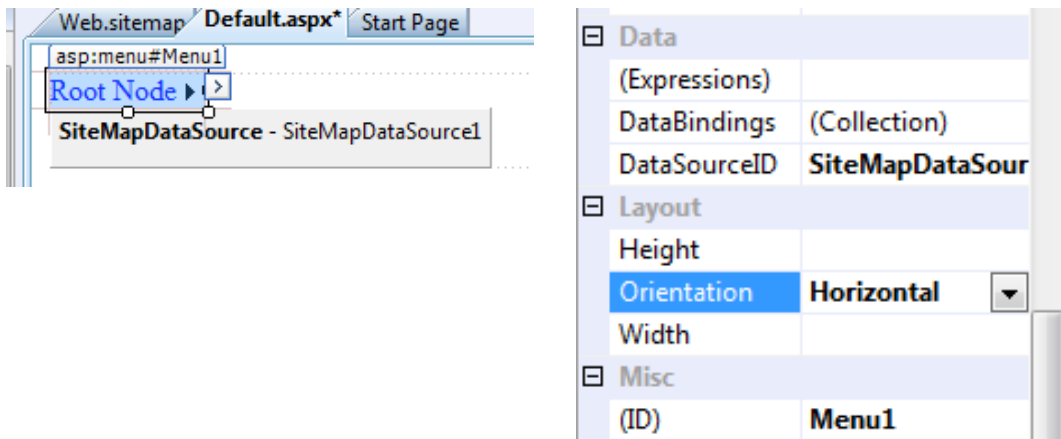
url : linkin gideceği adres

title : başlık

description : imleç link üzerine gelince gözükecek uyarı yazısı

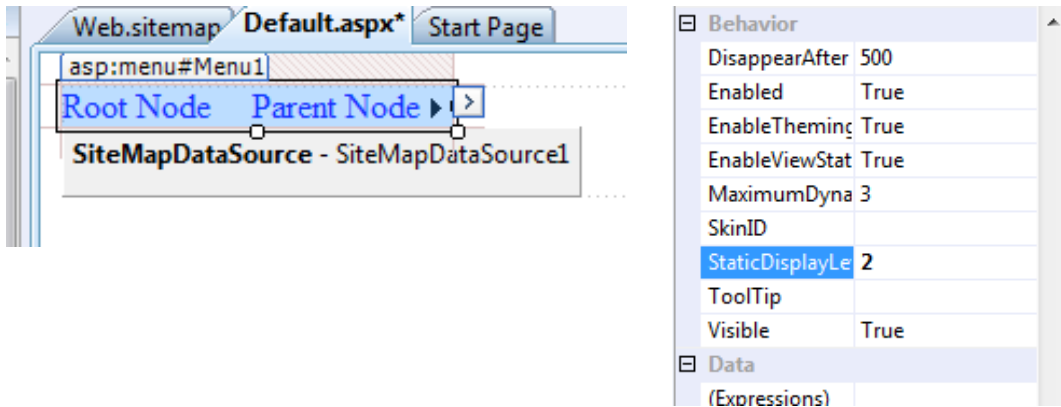
```
Web.sitemap* Default.aspx Start Page
<?xml version="1.0" encoding="utf-8" ?>
<siteMap xmlns="http://schemas.microsoft.com/AspNet/SiteMap-File-1.0" >
  <siteMapNode url="Default.aspx" title="Ana Sayfa" description="Burasi Ana Sayfaya Gider">
    <siteMapNode url="hakkimizda.aspx" title="Hakkımızda" description="" />
    <siteMapNode url="iletisim.aspx" title="İletişim" description="" />
  </siteMapNode>
</siteMap>
```

Menu kontrolüne tıklayıp properties den operation için Horizontal seçiyoruz

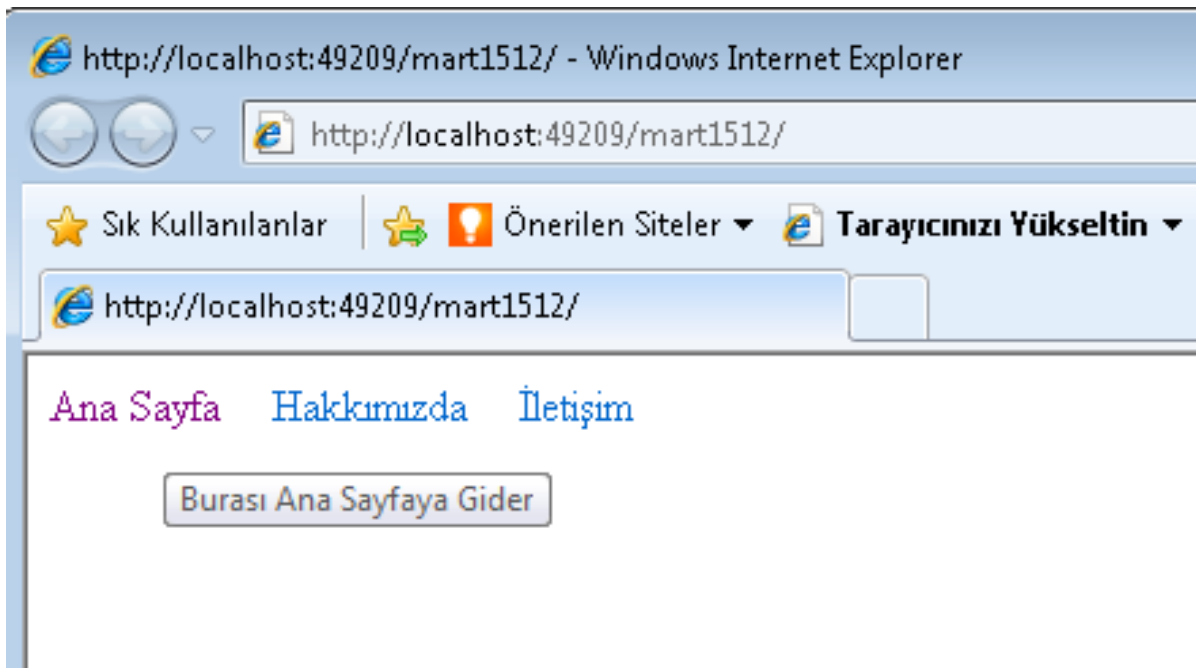


Menu Horizontal oluyor

Menu kontrolüne tıklayıp properties den StaticDisplay için 2 yapıyoruz

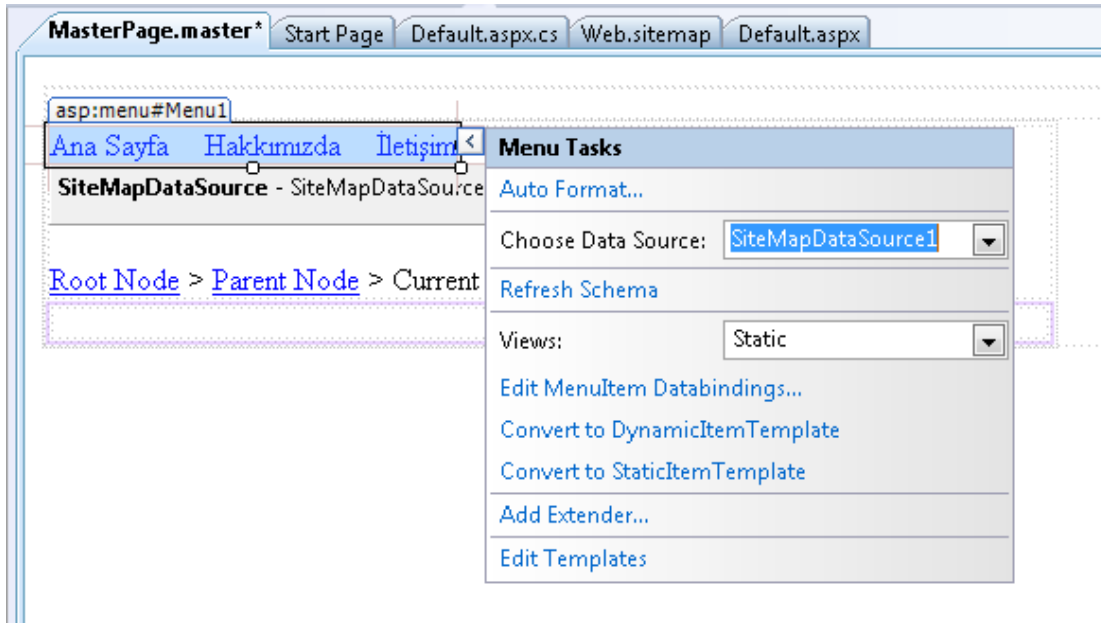


Kaydedip çayırtıyoruz, imleci Ana Sayfanın üstüne getirince uyarı yazısı çıkıyor.



Master.page oluşturuyoruz Web Site →add New Item →Master Page

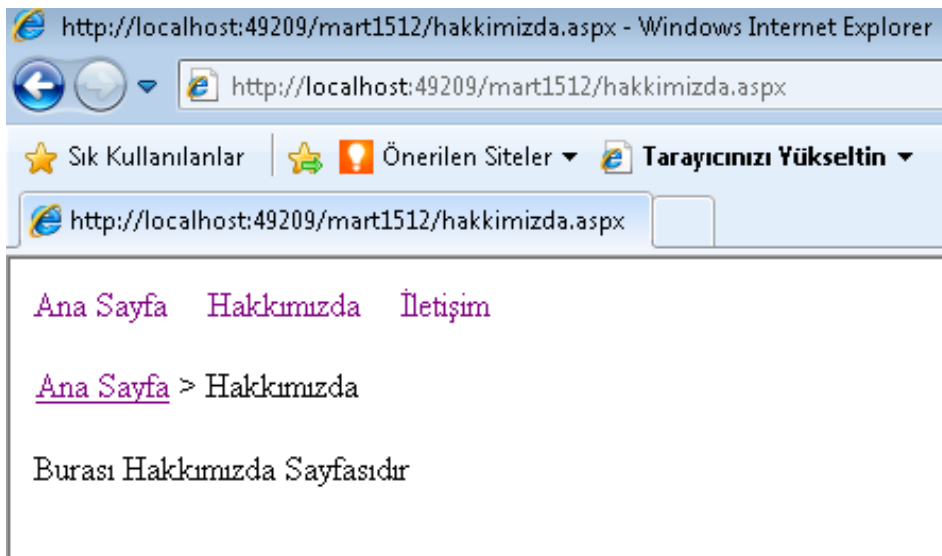
İki satır tek sütunluk tablo oluşturup alt satıra content place holderi taşıyoruz



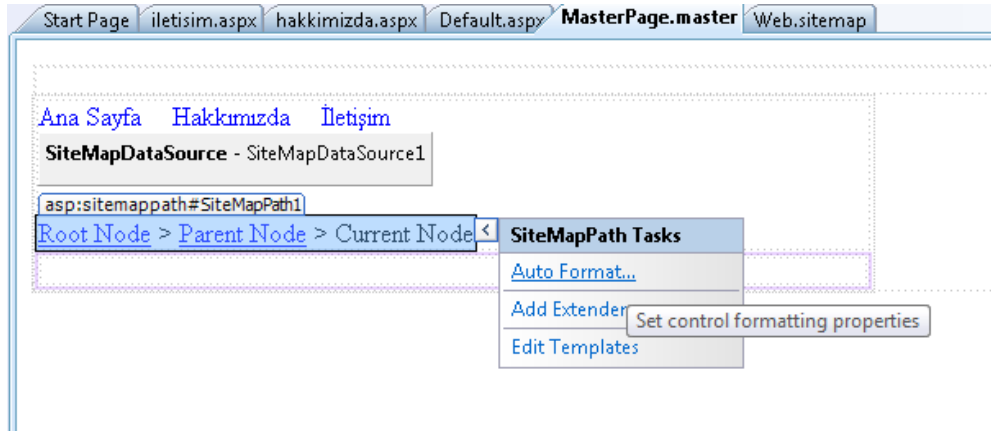
Üst satıra Menu ekleyip SiteMap Data Source'a bağlayıp onun altına Site Map ekliyoruz. Menu ya tıklayıp Orientation : Horizontal, StaticDisplaylevels : 2 yapıyoruz

Master.page imizden Default.aspx,hakkimizda.aspx,iletisim.aspx sayfalarını oluşturacağız.

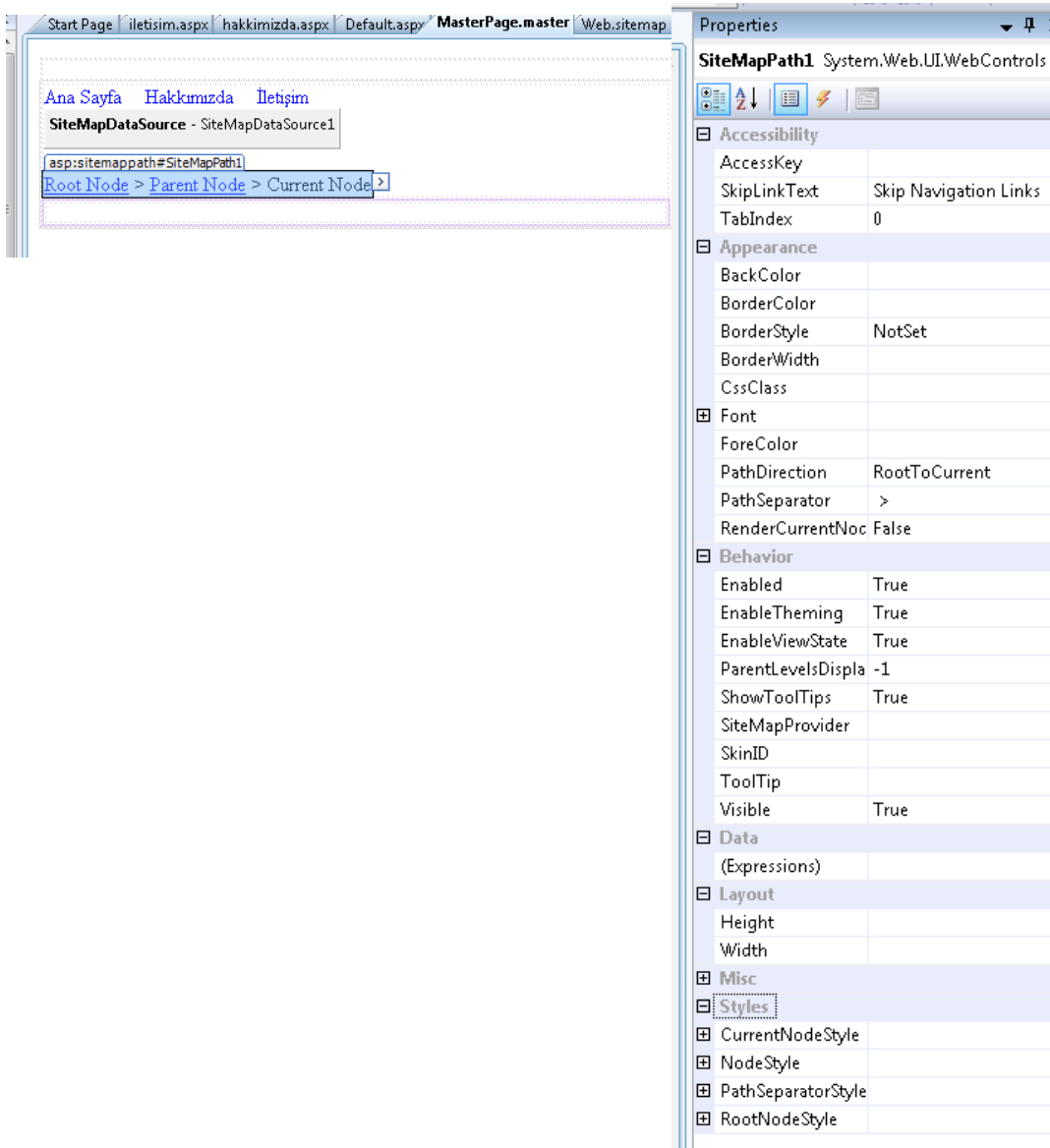
Kaydedip çalıştırıyoruz. Hakkımızda linkine tıklayınca hakkimizda.aspx sayfasına gidiyor ve görüntümüz şöyle oluyor



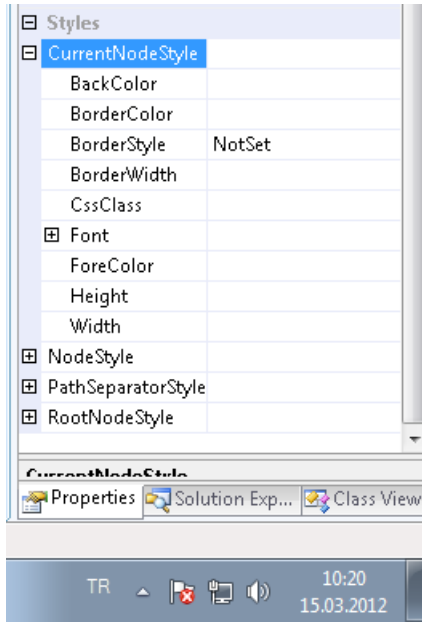
Site Map imizin stilini → SiteMapPath Tasks → Auto Format ayarlayabiliriz



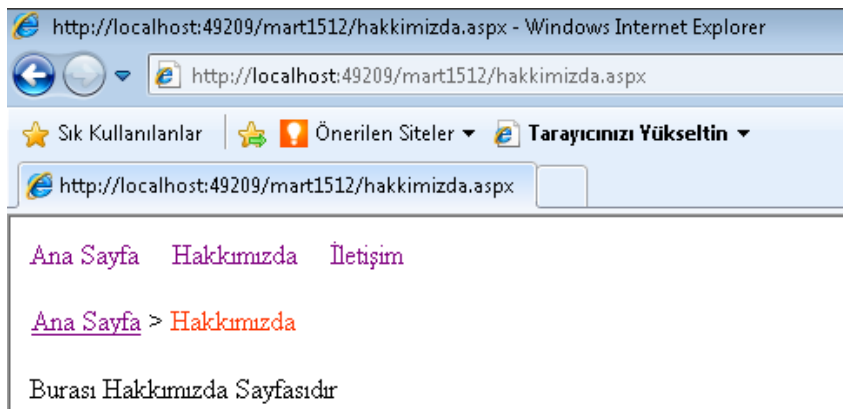
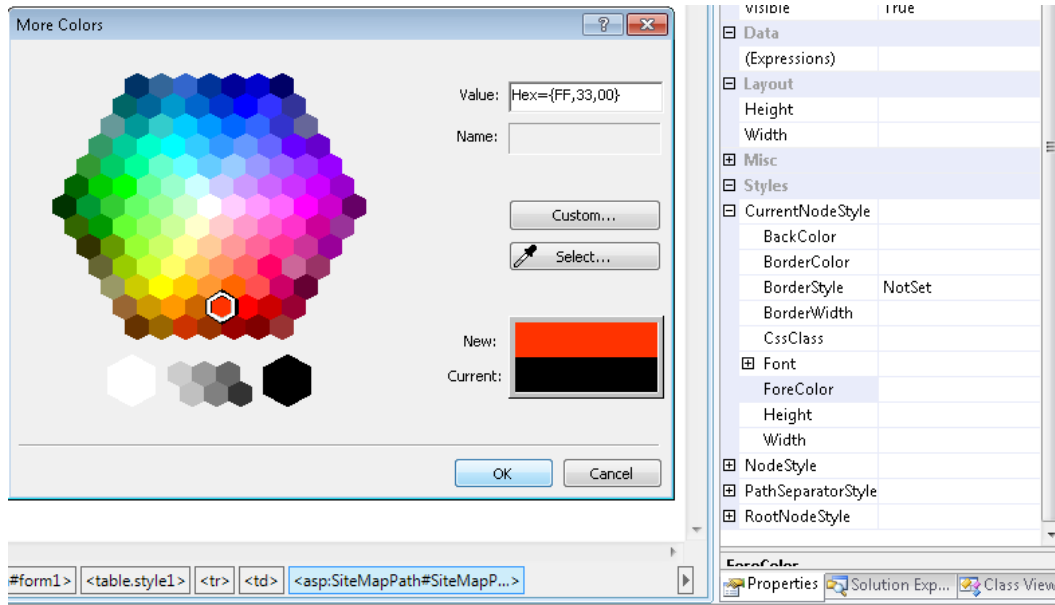
ya da Propertiesde Styles den ayarlayabiliriz



CurrentNodeStyle : Şu anki şekil başındaki + ya tıklayınca değiştirebileceğimiz özellikler çıkıyor

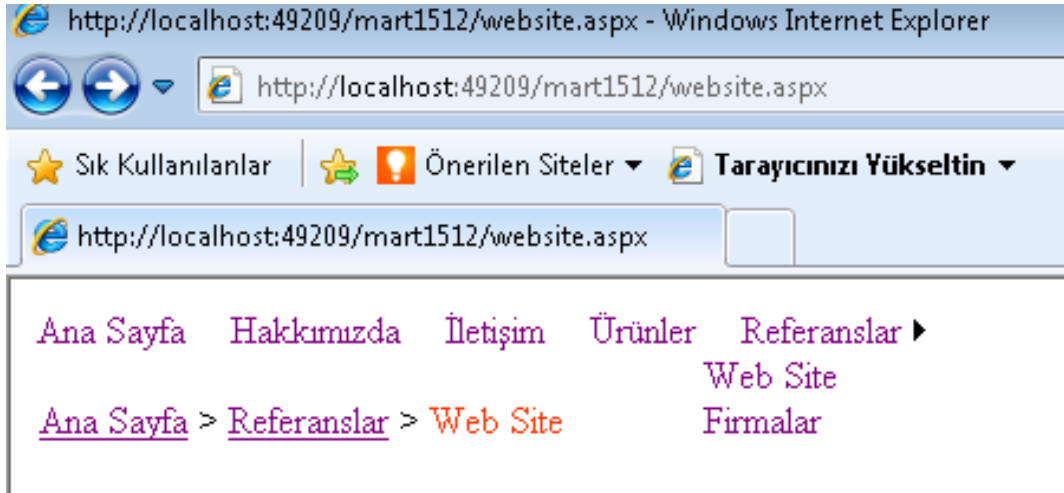
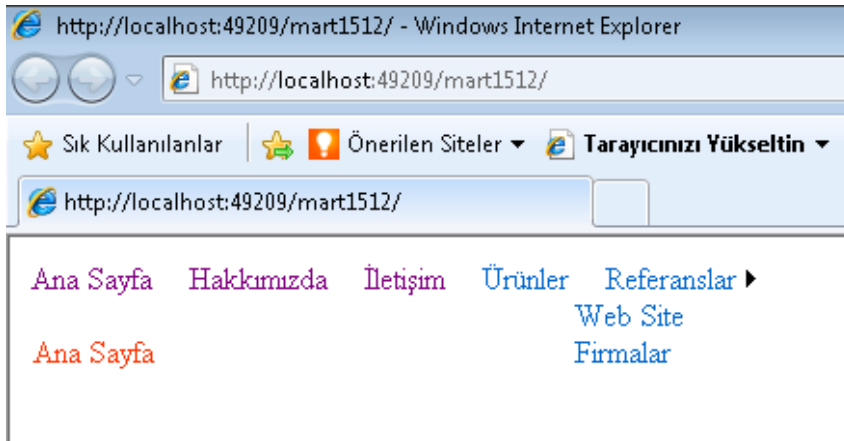


Örneğin yazı rengini kırmızı seçelim



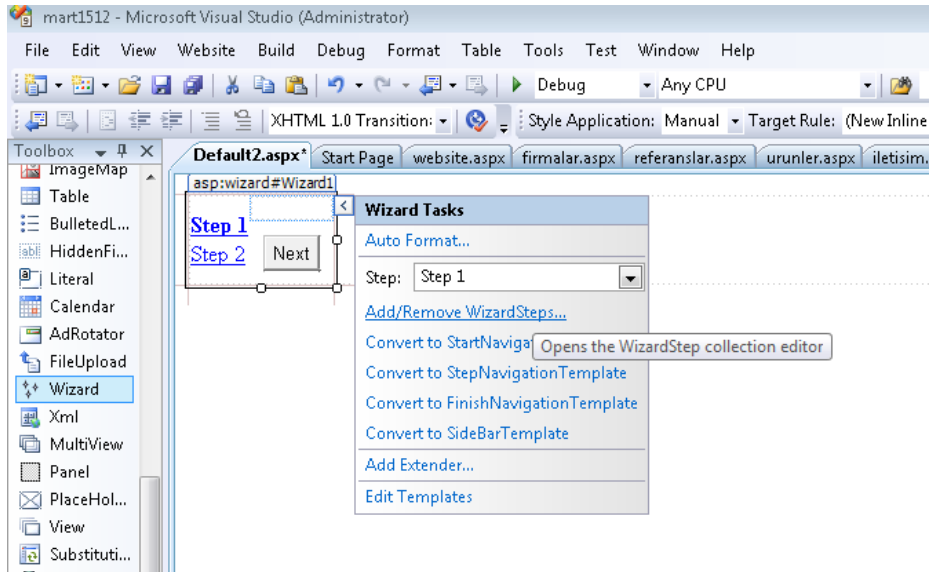
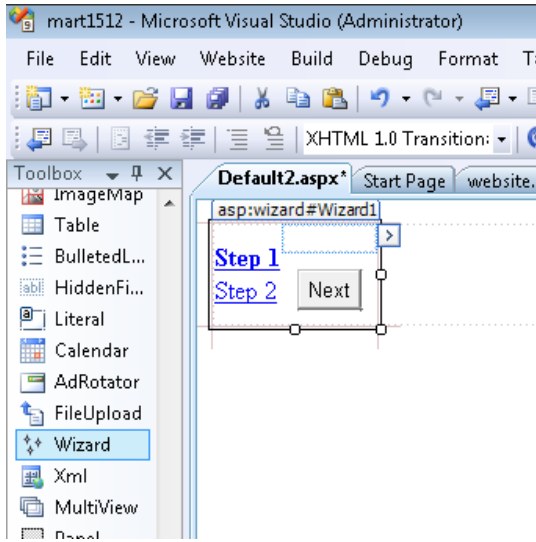
```
Start Page iletisim.aspx hakkimizda.aspx Default.aspx MasterPage.master Web.sitemap
<?xml version="1.0" encoding="utf-8" ?>
<siteMap xmlns="http://schemas.microsoft.com/AspNet/SiteMap-File-1.0" >
  <siteMapNode url="Default.aspx" title="Ana Sayfa" description="Burası Ana Sayfaya Gider">
    <siteMapNode url="hakkimizda.aspx" title="Hakkımızda" description="" />
    <siteMapNode url="iletisim.aspx" title="İletişim" description="" />
    <siteMapNode url="urunler.aspx" title="Ürünler" description="" />

    <siteMapNode url="referanslar.aspx" title="Referanslar" description="Burası Ana Sayfaya Gider">
      <siteMapNode url="website.aspx" title="Web Site" description="" />
      <siteMapNode url="firma.aspx" title="Firmalar" description="" />
    </siteMapNode>
  </siteMapNode>
</siteMap>
```

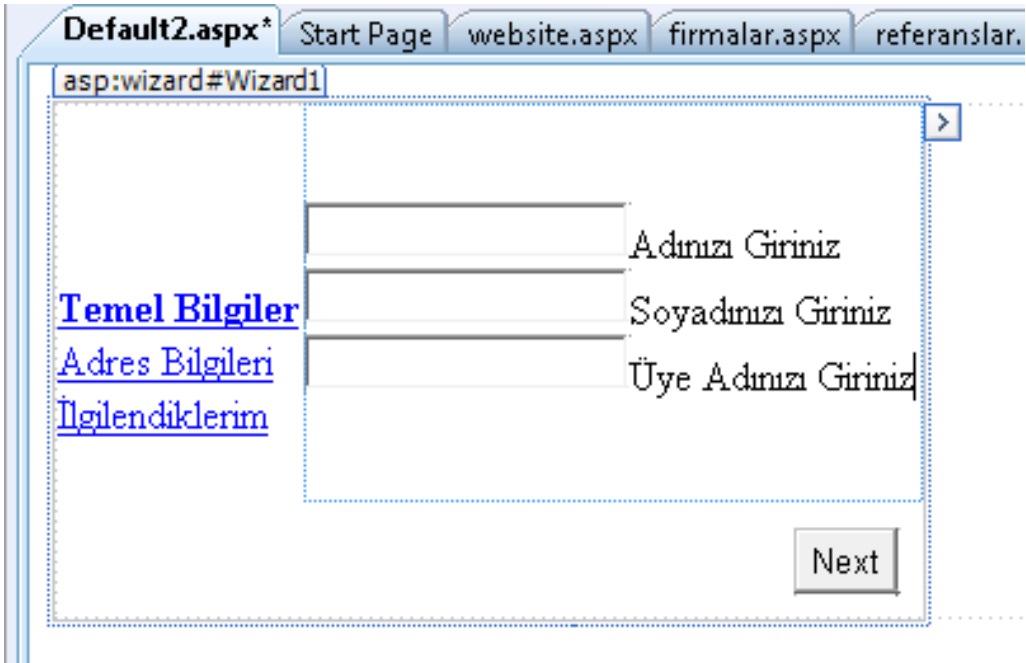
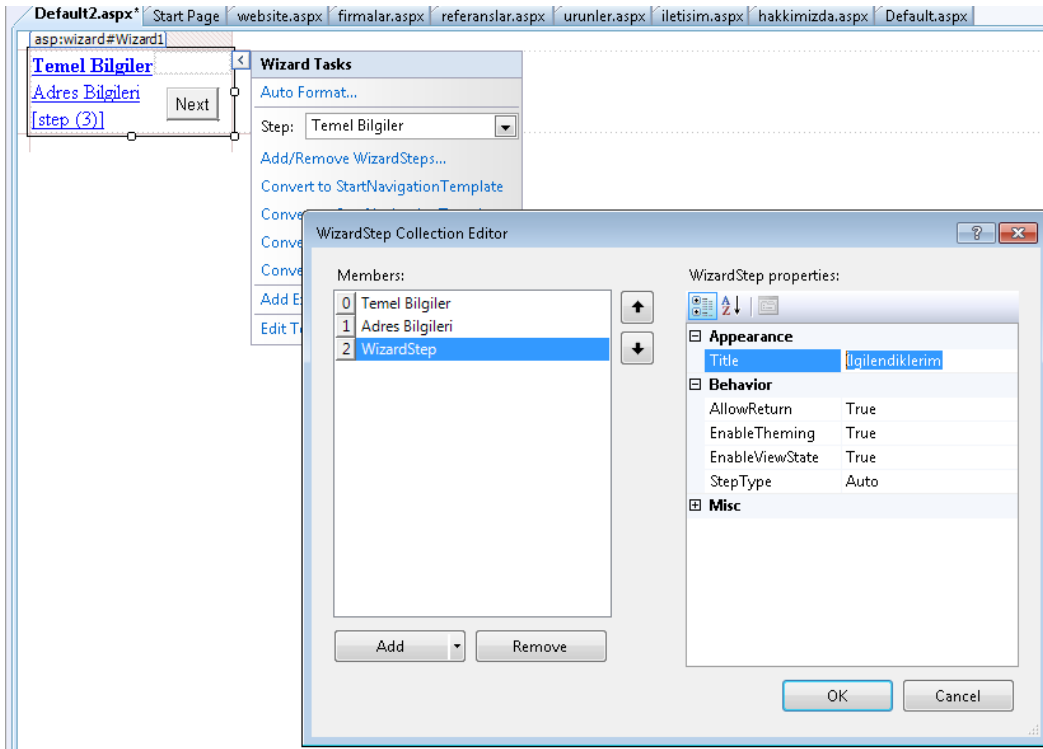


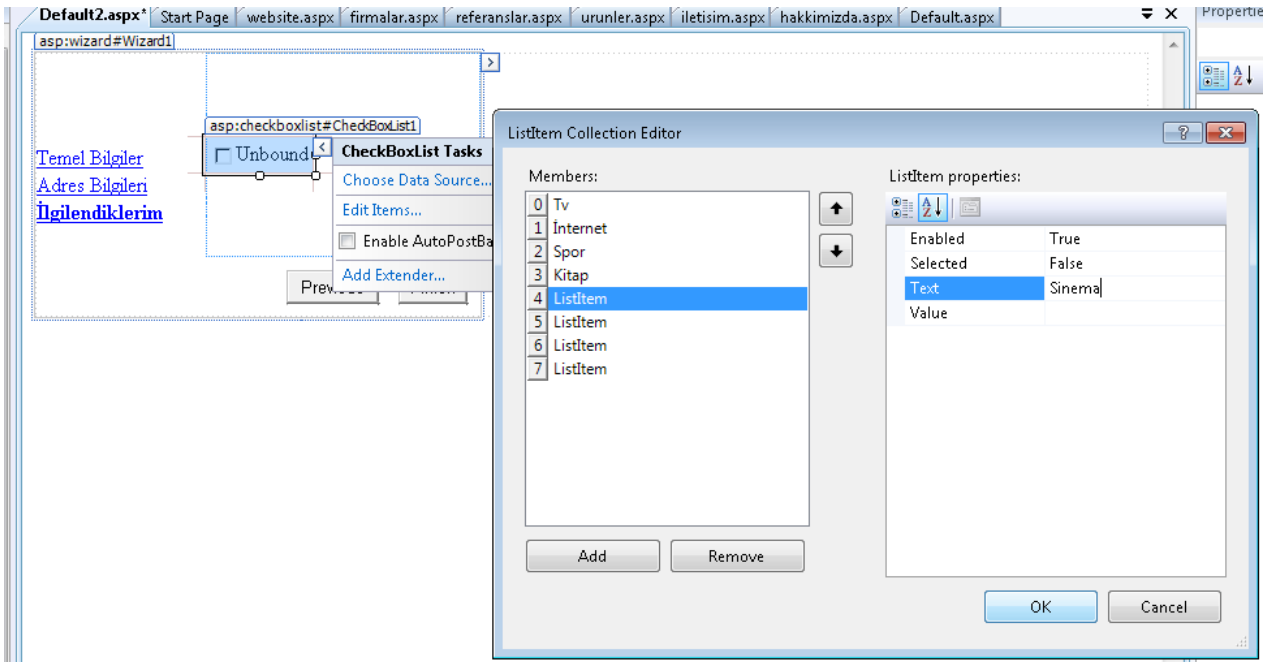
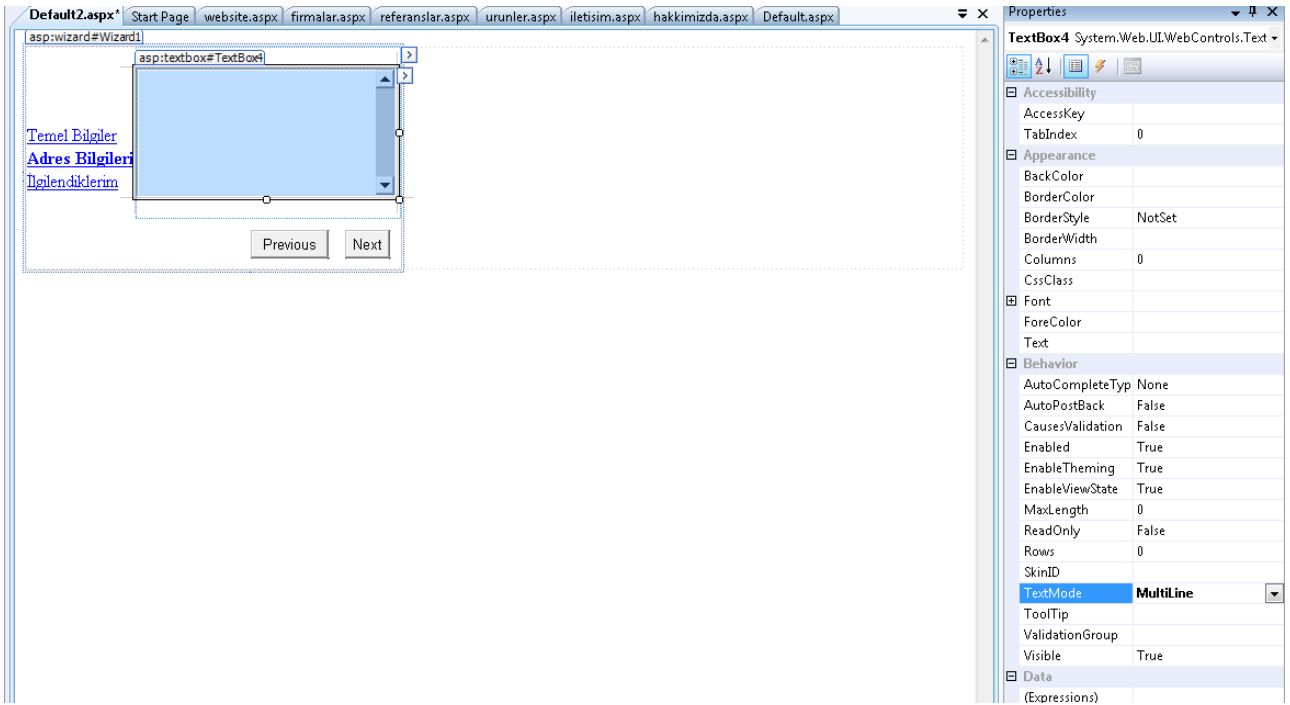
Yeni Sayfa Default2.aspx oluşturuyoruz

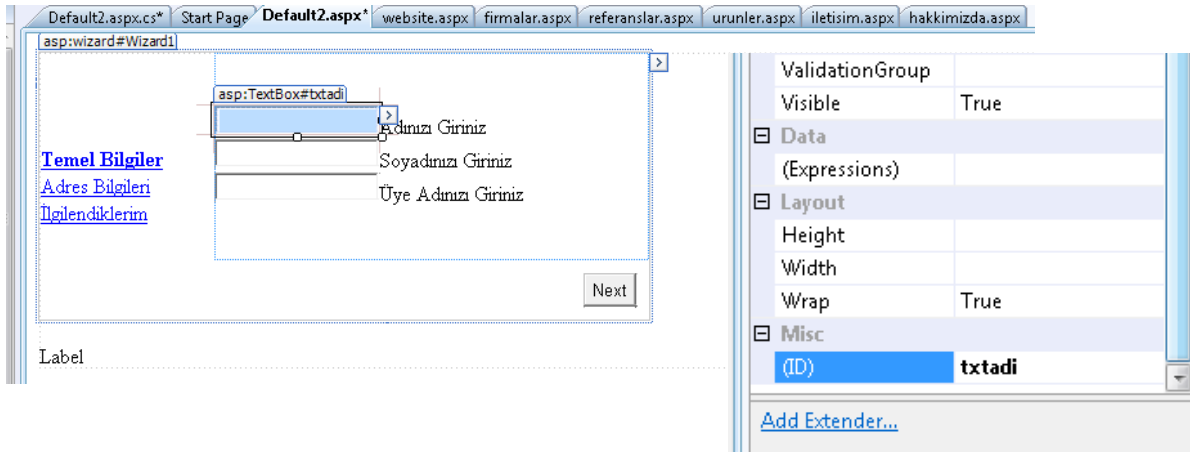
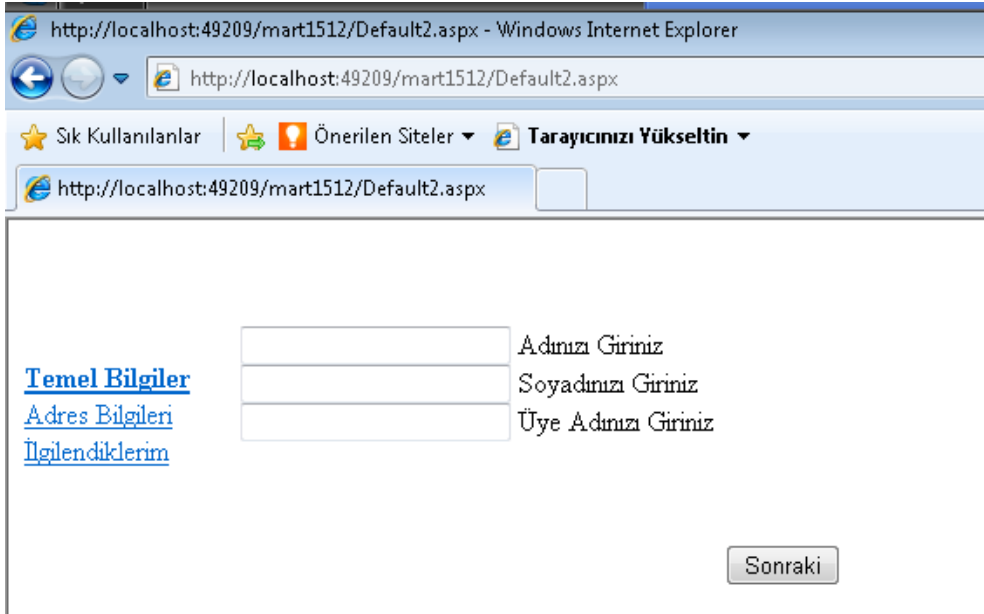
## Wizard Kontrolü :

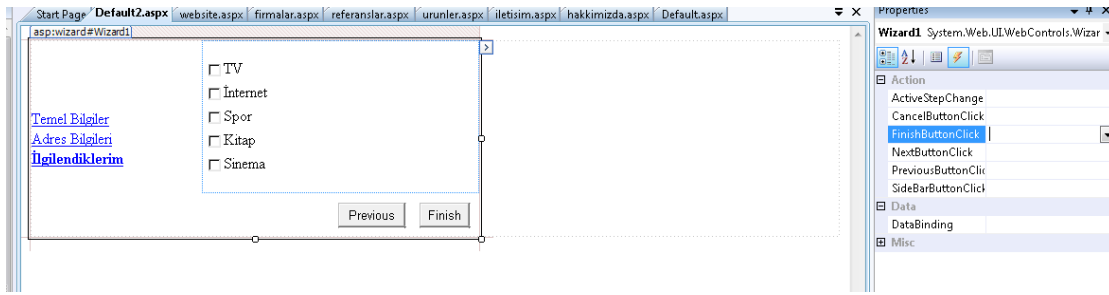












```
protected void Page_Load(object sender, EventArgs e)
{
}

protected void Wizard2_FinishButtonClick(object sender, WizardNavigationEventArgs e)
{
}

protected void Wizard1_FinishButtonClick(object sender, WizardNavigationEventArgs e)
{
    Label1.Text = "Merhaba. Adınız:<strong>" + txtadi.Text + " </strong> dur<br/>";
    Label1.Text += "Soyadınız <span style='color:red'>" + txtsoyadi.Text + "</span>";
    Label1.Text += "Üye adınız şudur:" + txtuyeadı.Text;

    int toplam = CheckBoxList1.Items.Count;
    Label1.Text += "<b>Seçili olan madde:</b><ul>";
    for (int i = 0; i < toplam; i++)
    {
        if (CheckBoxList1.Items[i].Selected == true)
        {
            Label1.Text += "<li>" + CheckBoxList1.Items[i].Value + "</li>";
        }
    }
    Label1.Text += "</ul>";
}
}
```

Yarın ; Google → <http://www.trentrichardson.com>

→ [http:// www.hotscripts](http://www.hotscripts)

→ [http:// www.codeproject](http://www.codeproject)

→ [http:// www.htmldrive.net](http://www.htmldrive.net)

→ [http:// www.lorem.lipsum](http://www.lorem.lipsum)